



RECP #: 752671

RECORDED 5/8/2019 AT 1:11 PM BK# 2620 PG# 1713
Debra K. Lee, CLERK OF LARAMIE COUNTY, WY PAGE 1 OF 1

STATE OF WYOMING CORNER RECORD

(In compliance with the CORNER PERPETUATION AND FILING ACT, Wyoming Statutes, 1997 Section 33-29-140, et. seq., and the Rules and Regulations of the Board of Registrations for Professional Engineers and Professional Land Surveyors)

NORTH QUARTER CORNER SECTION 11, T. 18 N., R. 61 W., 6TH P.M., LARAMIE COUNTY, WYOMING

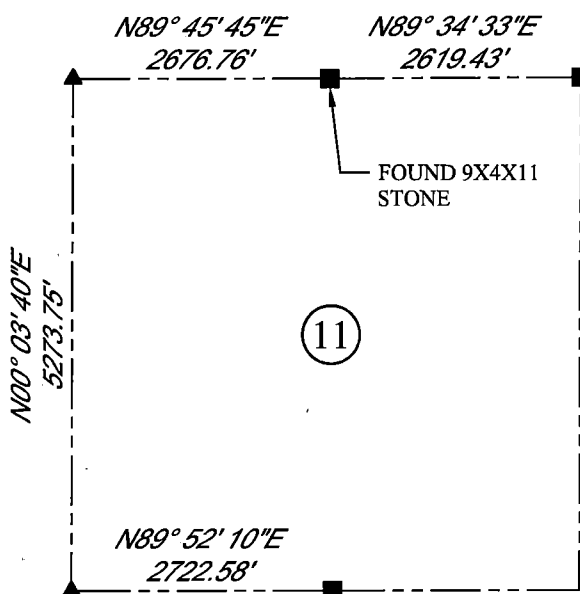
GLO: A LIMESTONE 14X12X6 SET 9 IN DEEP MARKED 1/4 ON N SIDE FOR 1/4 SEC COR.

FOUND: STONE ON SOUTH SIDE OF N & E FENCE COR. STONE IS 11X9X4. STONE IS BROKEN & NO MARKINGS WERE FOUND.

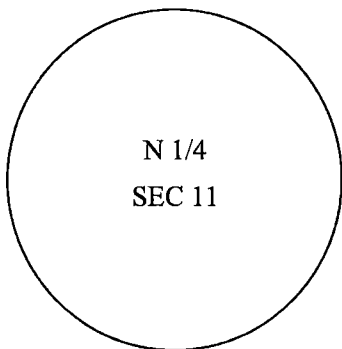
SET: NOTHING.



SCALE: NONE
NORTH DETERMINED BY
G.P.S OBSERVATIONS



FOUND STONE



LEGEND:

- FOUND BLM CAP
- FOUND USFS CAP
- FOUND STONE
- ◻ FOUND PRIVATE MONUMENT
- ◆ CALCULATED POSITION
- ▲ SET MONUMENT (LS10245)
- SECTION LINE

DATE OF FIELD WORK: 07/18/2018 OFFICE REFERENCE: MERIDEN

CROSS INDEX DIAGRAM

	1	2	3	4	5	6	7	8	9	10	11	12	13	14	15	16	17	18	19	20	21	22	23	24	25	
A																										
B																										
C			6			5			4			3			2					1						
D																										
E																										
F																										
G			7			8			9			10			11					12						
H																										
J																										
K																										
L			18			17			16			15			14					13						
M																										
N																										
O																										
P			19			20			21			22			23					24						
Q																										
R																										
S																										
T			30			29			28			27			26					25						
U																										
V																										
W																										
X			31			32			33			34			35					36						
Y																										
Z																										
	1	2	3	4	5	6	7	8	9	10	11	12	13	14	15	16	17	18	19	20	21	22	23	24	25	

WOOD
2615 AVIATION DRIVE
SHERIDAN, WY 82801
PH: 307-675-6400

wood.

THIS CORNER RECORD WAS
PREPARED BY ME OR UNDER
MY DIRECTION AND
SUPERVISION,
SEAL AND SIGNATURE

